

USB\_XP\_Install - July 30, 2003

Installation instructions for the Mini-Me/Mini-Dac and Windows XP

With Windows XP the driver information is not properly installed at first and must be manually updated to run the Mini-Me or Mini-Dac properly. This is a one time process and will not have to be done every time the Mini series are plugged in via USB.

Be sure to download the latest drivers from the Apogee website at: [www.apogeedigital.com/usb/](http://www.apogeedigital.com/usb/)

Run Setup.exe located in the ApogeeM Folder.

(Install the drivers without the Mini-Me or Mini-Dac attached to the computer.)

Press the Agree button to continue.

If you have had any previous drivers installed it will ask you if you want to remove the old drivers first, select Yes.

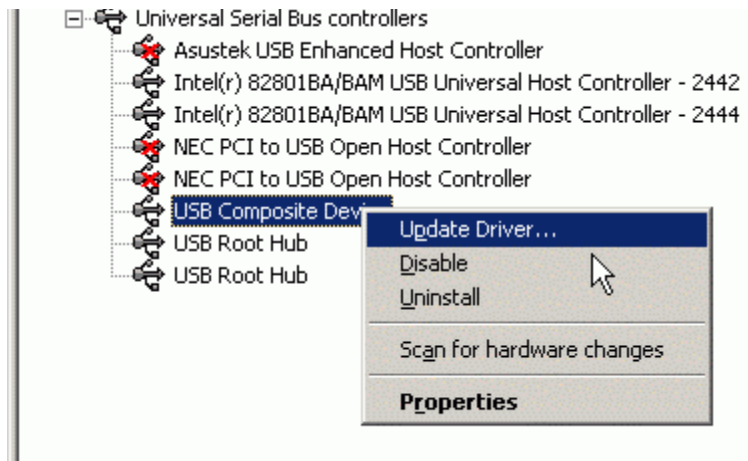
Reboot your computer when the driver installation has completed.

Once the computer has restarted attach the Mini-Me/Mini-Dac to the USB port.

At this point you will need to open the device manager for Windows XP and manually update the driver for the MiniMe/MiniDac.

To open the device manager right click on My Computer and select properties. Press the hardware tab and then press the Device Manager button.

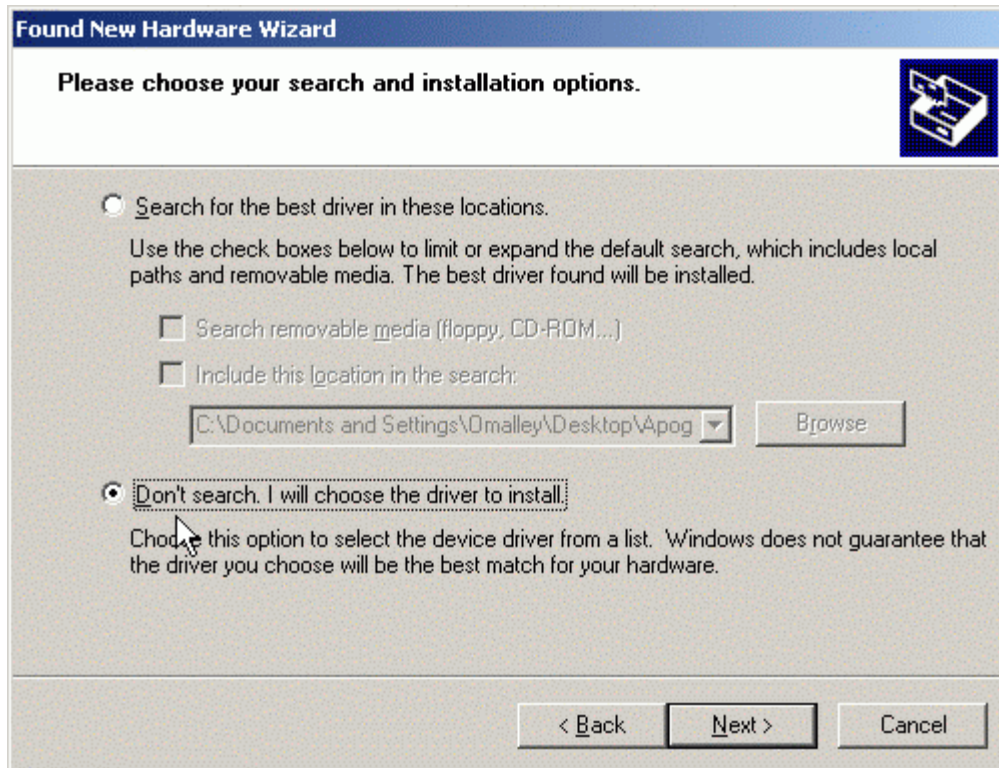
Locate the Universal Serial Bus Controllers and expand it.



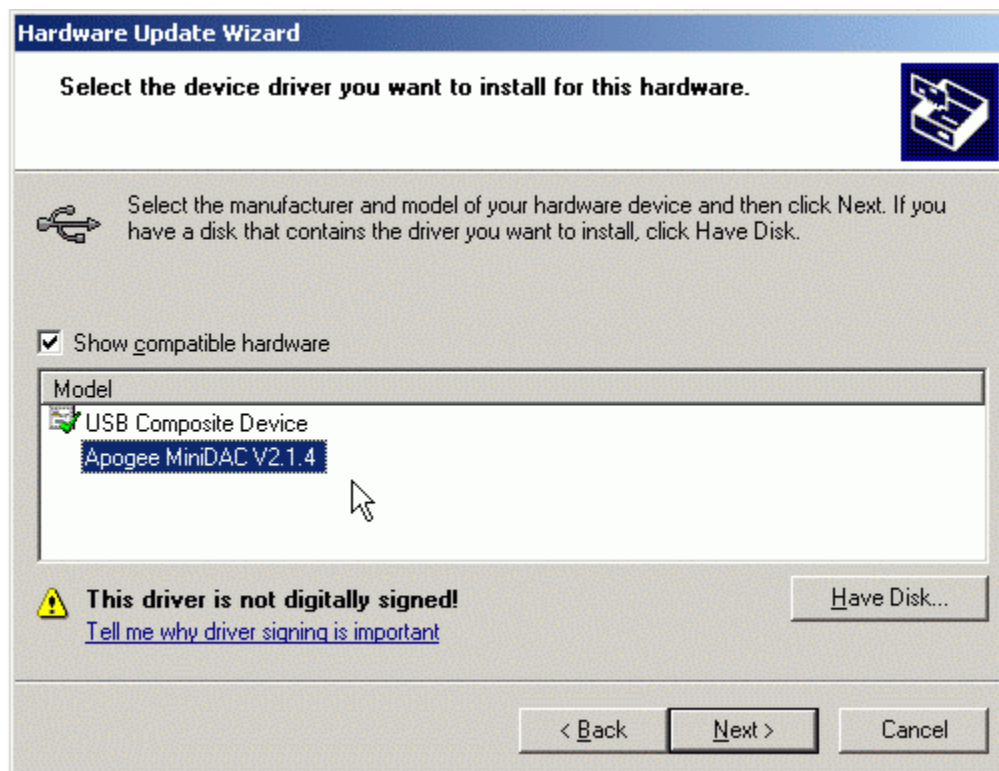
Highlight and right click on the USB Composite Device.  
Choose Update Driver.



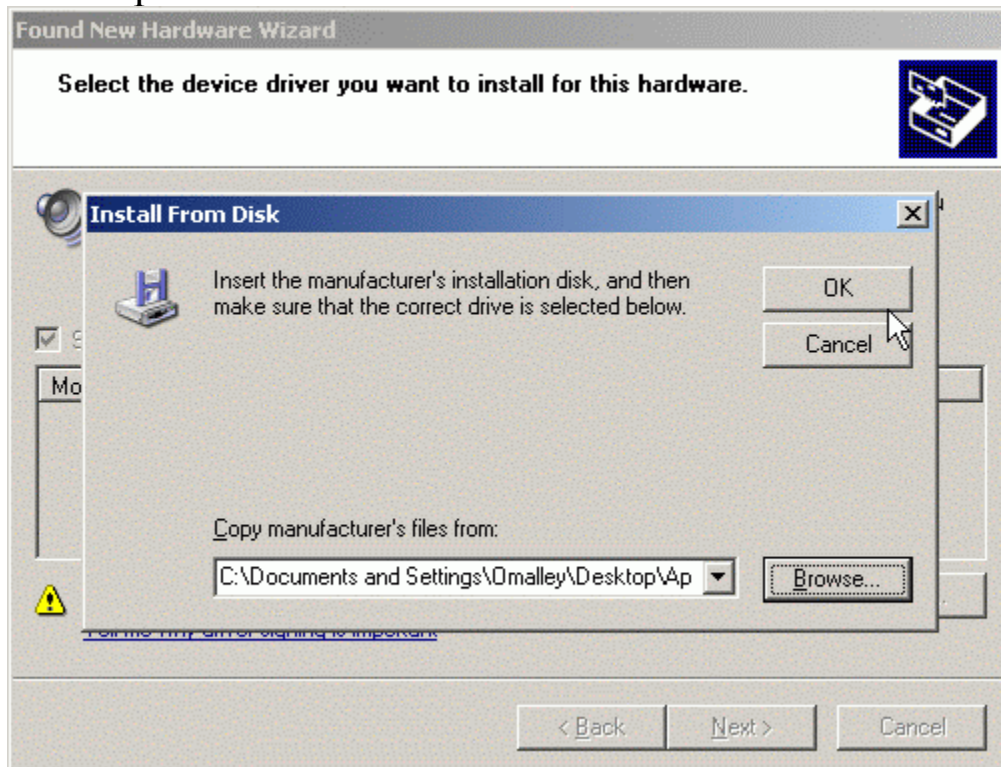
Choose the option to Install from a list and press Next.



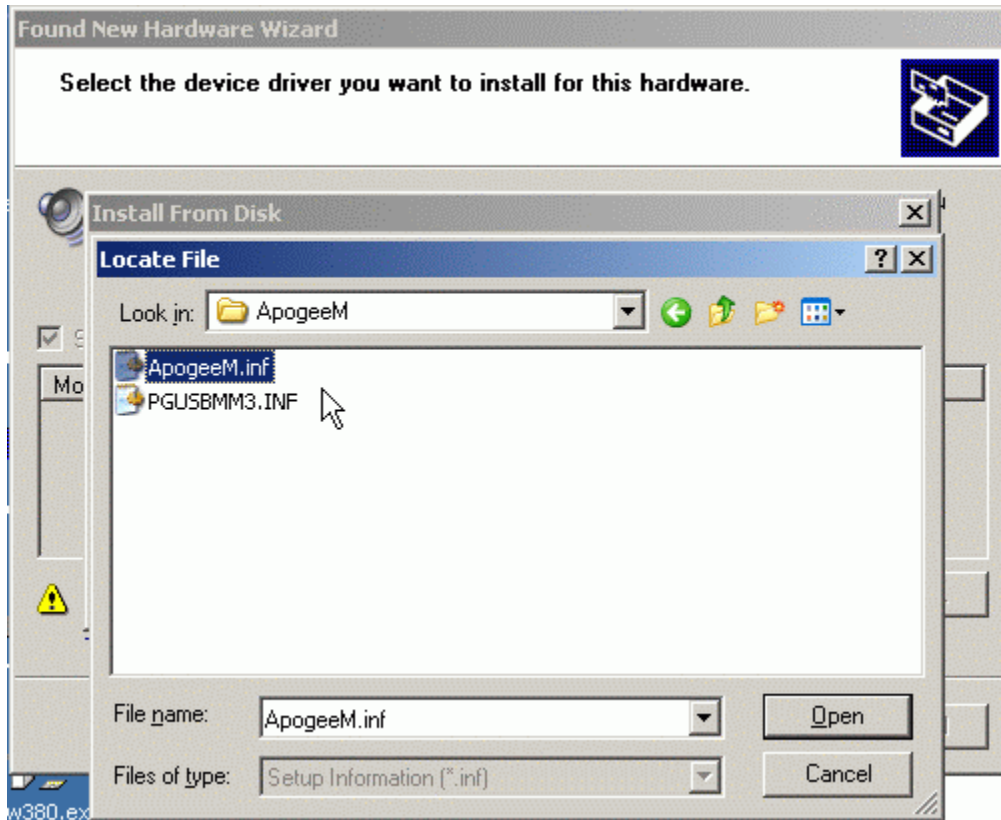
Choose the option of Don't search and press Next.



Choose the option for Have Disk



Browse to the location where the driver folder ApogeeM is located.

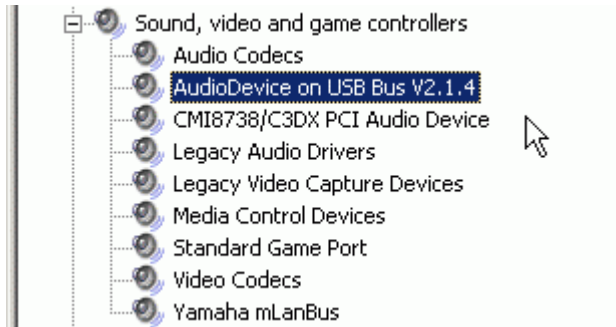


Highlight the ApogeeM.inf file and press Open. Press Ok on the next screen. Windows will now find the appropriate driver and give you a warning screen that the signature is not digitally signed, simply press the continue button and when it's finished installing press the Finish button.

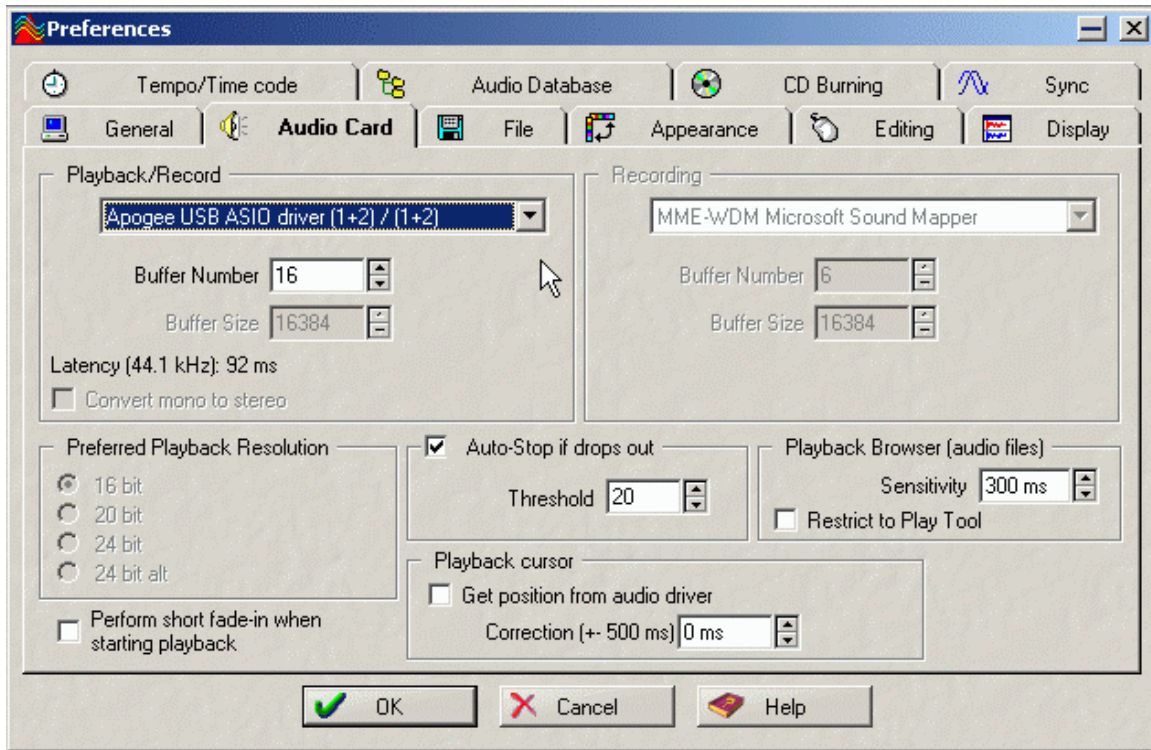
You should now see in under the Universal Bus listings either Apogee MiniDac or MiniMe depending on which device you are installing.



Proceed to the Sound, Video and Game Controllers listing and follow the same steps you did for the Universal Serial Bus update procedure. Once done the device manager will have Apogee MiniDac or MiniMe V2.1.4 under the USB listing and Audio Device on USB Bus V2.1.4



Close the device manager and proceed to your audio application of choice. Under the audio setup choose the Apogee ASIO driver. For example I have set up Wavelab with the Apogee MiniDac



At this point you are ready to begin using the Apogee Mini Series products.

If you should have any problems please feel free to email [support@apogeedigital.com](mailto:support@apogeedigital.com) or call us at 310-915-1000

Apogee Electronics  
3145 Donald Douglas Loop South  
Santa Monica, CA 90405

